

**ATTACHMENT A**

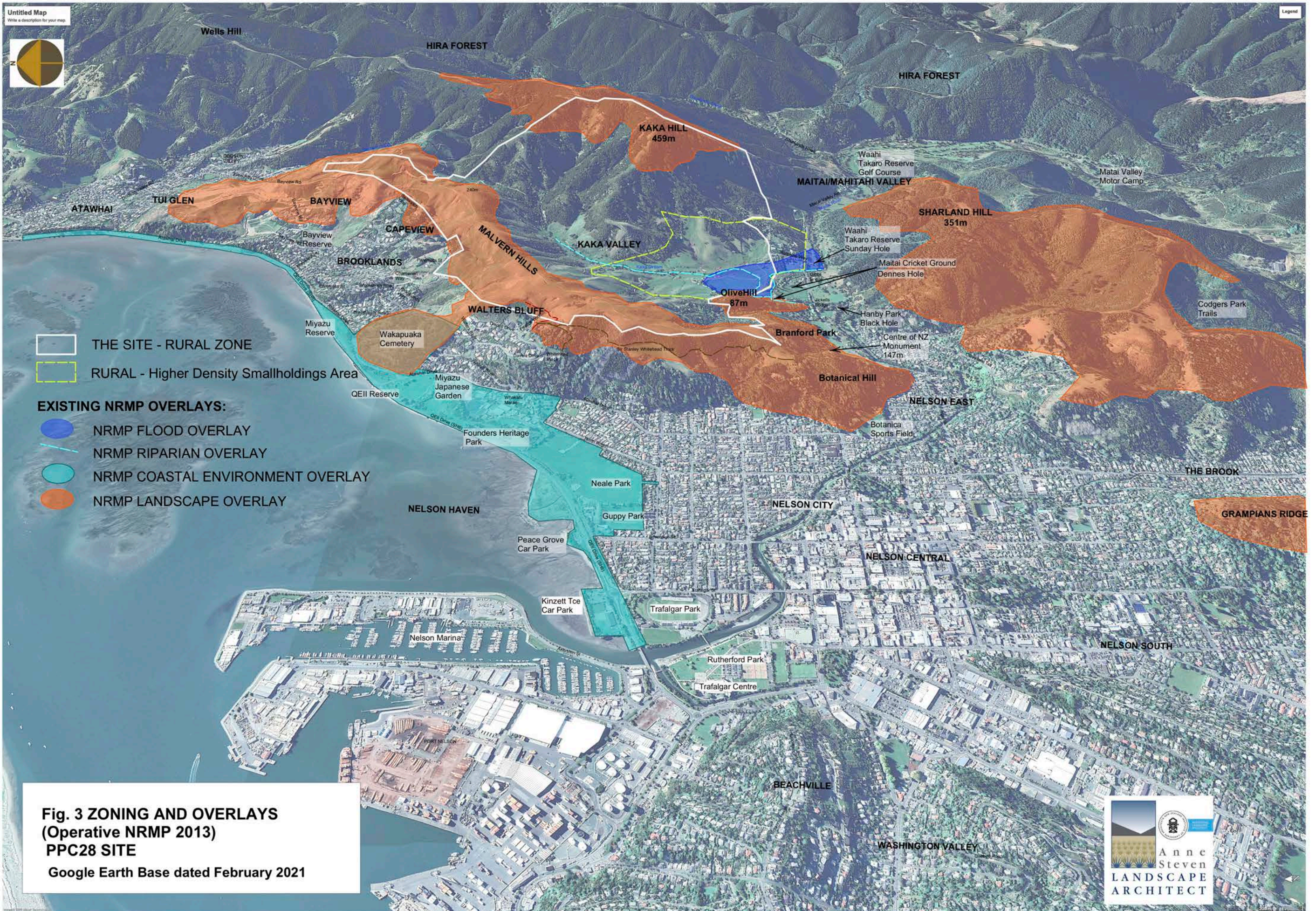
**Figures 1-5**

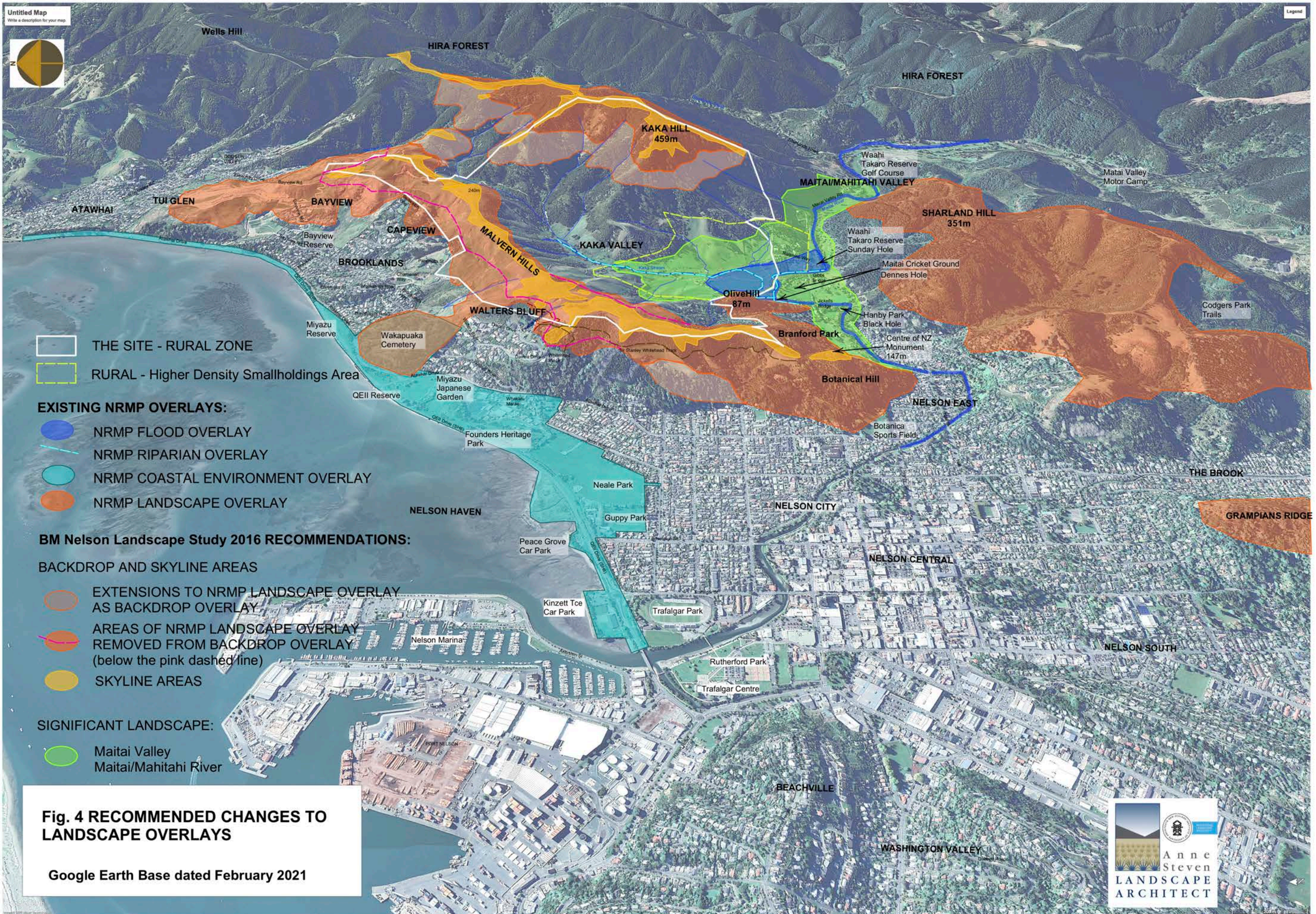
**To the Evidence of Anne Steven  
Landscape Architect  
For Save the Maitai Inc.  
In the Matter of Privatre Plan Change 28 – Maitahi Bayview**

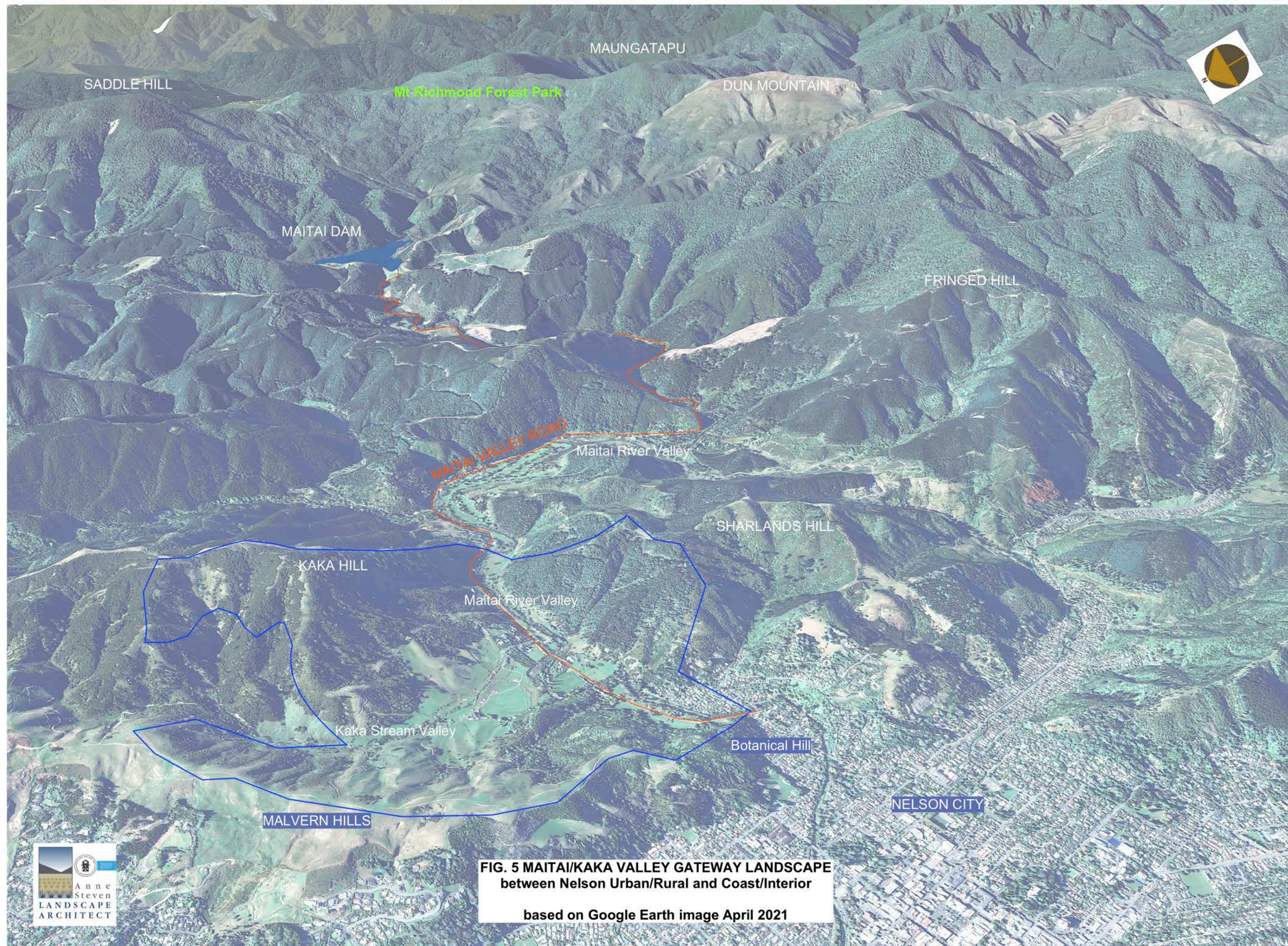
**June 27 2022**











**FIG. 5 MAITAI/KAKA VALLEY GATEWAY LANDSCAPE**  
**between Nelson Urban/Rural and Coast/Interior**  
based on Google Earth image April 2021