



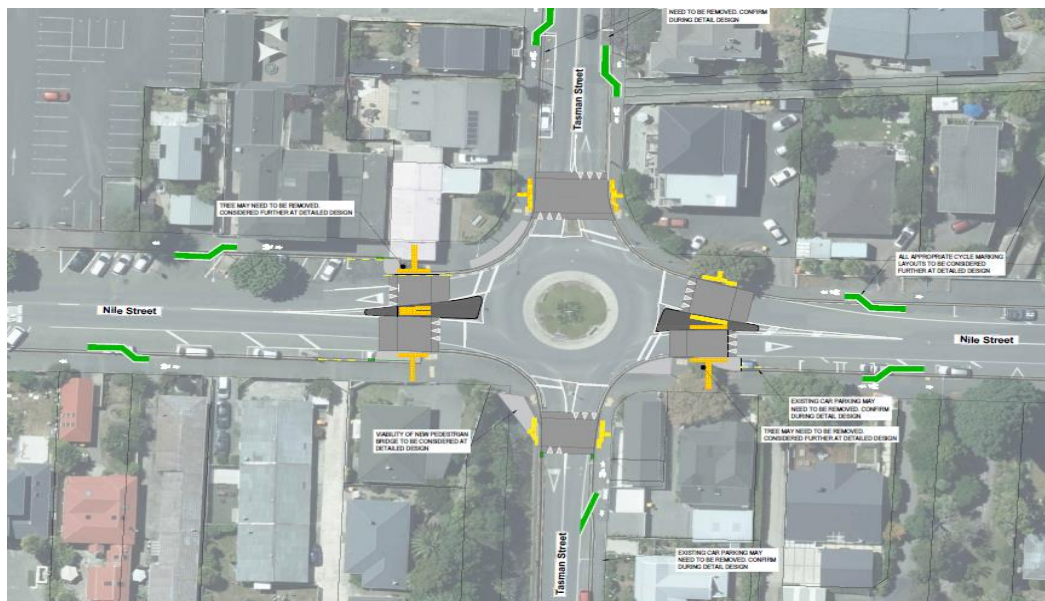
Kia ora,

Safety Improvements: Nile Street - Tasman Street intersection

The Nile Street - Tasman Street roundabout has been identified through the Waka Kotahi Road to Zero safety programme as having a high DSI (Death and Serious Injuries) crash rate that should be reduced.

There have been eight recorded crashes in the 10 years from 2012 to 2021. The roundabout is 160m from two primary schools, a tertiary education facility, an Intermediate School bus stop and it is encountered to two nationally recognised recreational cycle trails and a logging truck route. There are therefore multiple transport modes to be accommodated safely.

To safely accommodate these different modes of traffic, Nelson City Council (NCC) is planning to upgrade this intersection. Several treatments are proposed to achieve this.



What are we doing:

- Installing raised platforms around the roundabout.
- Introducing traffic calming features like lane separating, kerb buildouts, footpath extensions, and green marking for cycle lanes.
- Adding cycling/pedestrian friendly facilities like lane separators and pedestrian crossing markings.

The following benefits are expected from this work:

- Lower speeds on the roundabout approaches – reducing the crash rate.

- Reduced severity if a crash event occurs.
- Improved pedestrian links on all approaches

We are seeking feedback from nearby businesses and residents on what we are proposing. This will help to inform our planning before we proceed to construction.

If you have any feedback, then we'd really appreciate you letting us know. Please feel free to contact me, Pradip Rupakheti (NCC Project Manager) at Pradip.rupakheti@ncc.govt.nz / Ph: 03 265 5281. We will also visit all the businesses in the coming weeks if you would like to speak to us face to face.

We look forward to hearing from you,

Ngā mihi,

Pradip Rupakheti