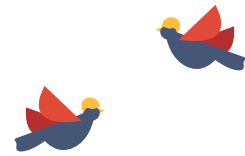


Rutherford Street Stormwater Upgrade

Update Four – October 2022



Work is progressing along Rutherford Street and Waimea Road following the change in traffic layout in September. We are wrapping up Phase Two, which included watermain and sewer pipe work on the eastern side of the road, and are now moving into Phase Three.

Project milestones for Phase Two

Subcontractors have completed installation of the 1.8m diameter stormwater pipe underneath Rutherford Street. New watermain connections into Wellington Street have also been tested and made live, which means we can now cover the holes with a base layer of asphalt. This base layer is the first of two, which is why areas of the site look unfinished. We will complete the final surface nearer the end of the project.

New sections of watermain have been drilled and trenched in Rutherford Street using a hi-tech method called directional drilling, and progress has also been made on the sewer pipe and associated manholes. A watermain connection has been completed at the bottom of Examiner Street, which feeds water across Rutherford Street and up into Mount Street and Konini Street.

Waimea Road work is still progressing well, with crews now passing the deepest section (6.5m deep!) of the excavation for their section of the 1.8m diameter pipe. We are still on target to have Waimea Road reinstated and open before Christmas.

What's coming up in Phase Three

Phase Three of the project is scheduled to begin next week. Wellington Street will be opened, and the main flow of traffic will be slightly shifted onto the western side of Rutherford Street.

Our site on the eastern side of Rutherford will be extended south along the road and into the bottom of Bronte Street, next to Rutherford Street Kindergarten. The watermain and sewer pipe we started in Examiner Street will be installed down this side of the road and connect into existing pipework at Bronte Street.

Looking ahead to Christmas

This important infrastructure work remains on track and we hope to have Waimea Road open to traffic before Christmas. However, there is still quite a bit of work to complete so we are making the best of the weather conditions and getting on with it!

We would like to thank the community for their feedback on the project so far. Thanks to everyone's input, we have been able to make adjustments to areas along the project and make the site even safer for the community.

Contacts

- Construction queries or reporting urgent issues: Fulton Hogan on 027 456 7654
- General queries: Nelson City Council on 03 546 0200
- Email: projects@ncc.govt.nz

Keep up to date with the project on shape.nelson.govt.nz/rutherford-street



Detour layout – Phase Three

Approx. October – December 2022



Businesses are open as normal while work is being completed.

What's happening during Phase Three:

1. Complete watermain and sewer pipe on the eastern side of Rutherford Street.
2. Reinstate Examiner/Rutherford Street intersection and reopen Examiner Street.
3. New asphalt footpath around shops at the corner of Waimea Road/Rutherford Street.
4. Complete watermain and sewer pipe work at the bottom of Bronte Street.

- **Approximate work area**
- **Business/resident access only**
- **Traffic detour**
- **Road closure**