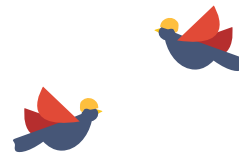


Rutherford Street Stormwater Upgrade

Update Two – July 2022



We have seen great progress since we last wrote to you, with both stormwater crews starting to place the 1.8m concrete pipes along Rutherford Street and Waimea Road. There's also been progress on each of the watermains. This flyer includes a few updates on the project, as well as information on traffic management following feedback from the community.

Phase 1 information video

We have produced a video for the project, which includes a modelled flyover of the works and introduces some of the team you will have seen around the site.

This video shows the detour route and a top-down view of some of the areas of Waimea Road and Rutherford Street we are working on.

Follow the link below or scan the QR code to watch the project video.

shape.nelson.govt.nz/rutherford-street



Around the site – keeping your streets safe

We have listened to your feedback regarding the speed of traffic travelling through the detour, particularly on Rutherford Street and Brougham Street. Keeping pedestrians and cyclists safe is our top priority, so we have made the following changes:

- A diagonal pedestrian crossing has been placed at the Van Diemen/Rutherford Street intersection for students and pedestrians
- Pedestrian refuges to have been placed on Brougham Street, Rutherford Street and Waimea Road to help pedestrians crossing the road near the project
- Speed monitoring signage has been placed on Rutherford Street
- Police are aware of traffic speeding through this area, and will be monitoring

Temporary roundabouts

Temporary roundabouts have been in place at the Rutherford/Brougham and Trafalgar/Brougham intersections for the last three weeks. These are doing a good job of controlling the flow of traffic, and we have added signage to make them easier to see. Further signage is planned, and we are using social media and other channels of communication to make sure drivers follow the roundabout layout correctly.

Van Diemen Street closure

Last week, we temporarily placed a VMS board (electronic message board) with the message "Road Closed – Please Turn Back" at Van Diemen Street and handed out leaflets highlighting the dangers of not following the signage onsite. We are also letting the wider Nelson community know there is currently no access from Van Diemen Street into Ngatitama Street. We will continue to monitor this intersection and ask road users to respect the signage placed onsite, as it is there to keep everyone safe.





Contacts

- Construction queries or reporting urgent issues: Fulton Hogan on 027 456 7654
- General queries: Nelson City Council on 03 546 0200
- Email: projects@ncc.govt.nz