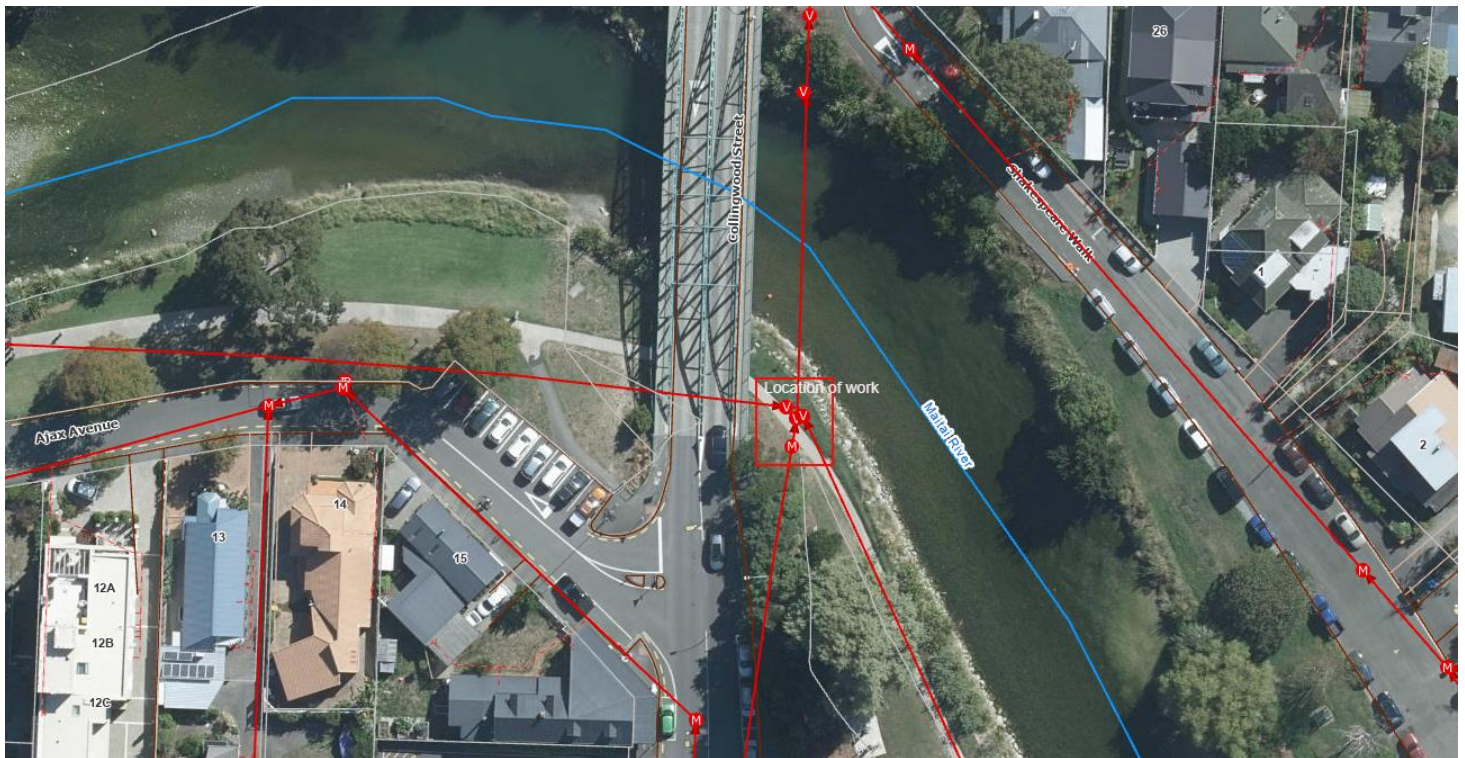


WORKS NOTICE – POTHOLING INVESTIGATION

WHAT WHEN TRAFFIC

SWALLOW MAIN ACCESS CHAMBER INSTALLATION FROM MID - AUGUST 2022 PEDESTRIAN RESTRICTIONS WILL BE IN PLACE



WHAT ARE WE DOING?

- The wastewater pipe that runs under the Maitai River is a part of our network that we really need to take care of. It connects the city centre to our treatment plant in Nelson North. To improve our ability to look after this pipe, we will be installing a new access chamber near the river. This will help us to monitor the pipe and clean it out if needed. Before we install the chamber, we need to confirm the location of the current pipes and services. This is done through creating multiple small investigation holes in the grass reserve using a hydrovac (a jet of water to dig down to the pipes). Gathering this information will help us to complete the final design for the chamber.

DURATION:

- One week, from mid-August 2022 (subject to weather)

TRAFFIC CONDITIONS:

- A temporary pedestrian diversion will be in place along the Maitai shared pathway.

FIND OUT MORE:

- For more information, please contact the Council's contractor - Nelmac Stu Lowe on 027 545 2311 or email: Slowe@nelmac.co.nz