

Port Area

About the area

The Port area features:

- Predominantly industrial space.
- Port Nelson, a tidal port and one of the larger ports in Aotearoa New Zealand. It is the largest commercial fishing base in New Zealand, with facilities for fish processing. Other activities include boat repairs, the marina and a public boat ramp, retail, cafés, pubs and restaurants. The Port is also popular for personal recreational boating and fishing.
- Some residential areas.
- Research facilities, including the National Institute of Water and Atmospheric Research (NIWA), and NZ Institute for Plant and Food.
- Open spaces for recreation.
- Reclaimed land.

What's at risk?

At present day:

- Port Nelson is generally elevated above present day 1% AEP coastal inundation events.
- Lower-lying areas that are within the present day 1% AEP coastal inundation area include a section of Hay Street, and a container area on the west side of the port near Collins Street.
- SH6 along Wakefield Quay is impacted by wave run-up, and occasionally closes to traffic during storm events.
- SH6 access is partially protected by a concrete seawall between the Port and Tāhunanui. Operation and maintenance costs may rise if storms become more intense and the sea level rises.

In future:

- Half a metre of sea level rise would significantly increase the impact of 1% AEP coastal inundation events. Approximately 30% of the Port would be affected, including most of the internal roads.
- At one metre of sea level rise, the majority of the Port would be inundated during a 1% AEP coastal inundation event.
- Port Nelson is outside of the Maitai River floodplain up to 2130.

What's happened previously?

- During Cyclone Fehi (February 2018), as a result of storm surge combined with a king tide significant damage was done to waterfront properties on Wakefield Quay.

What's being done?

- Council upgrade of stormwater on a section of Haven Road and Vickerman Street may assist in reducing surface flooding in this locality.
- Coastal adaptation planning is required in collaboration with Port Nelson and business owners.

shape.nelson.govt.nz/climate-adaptation

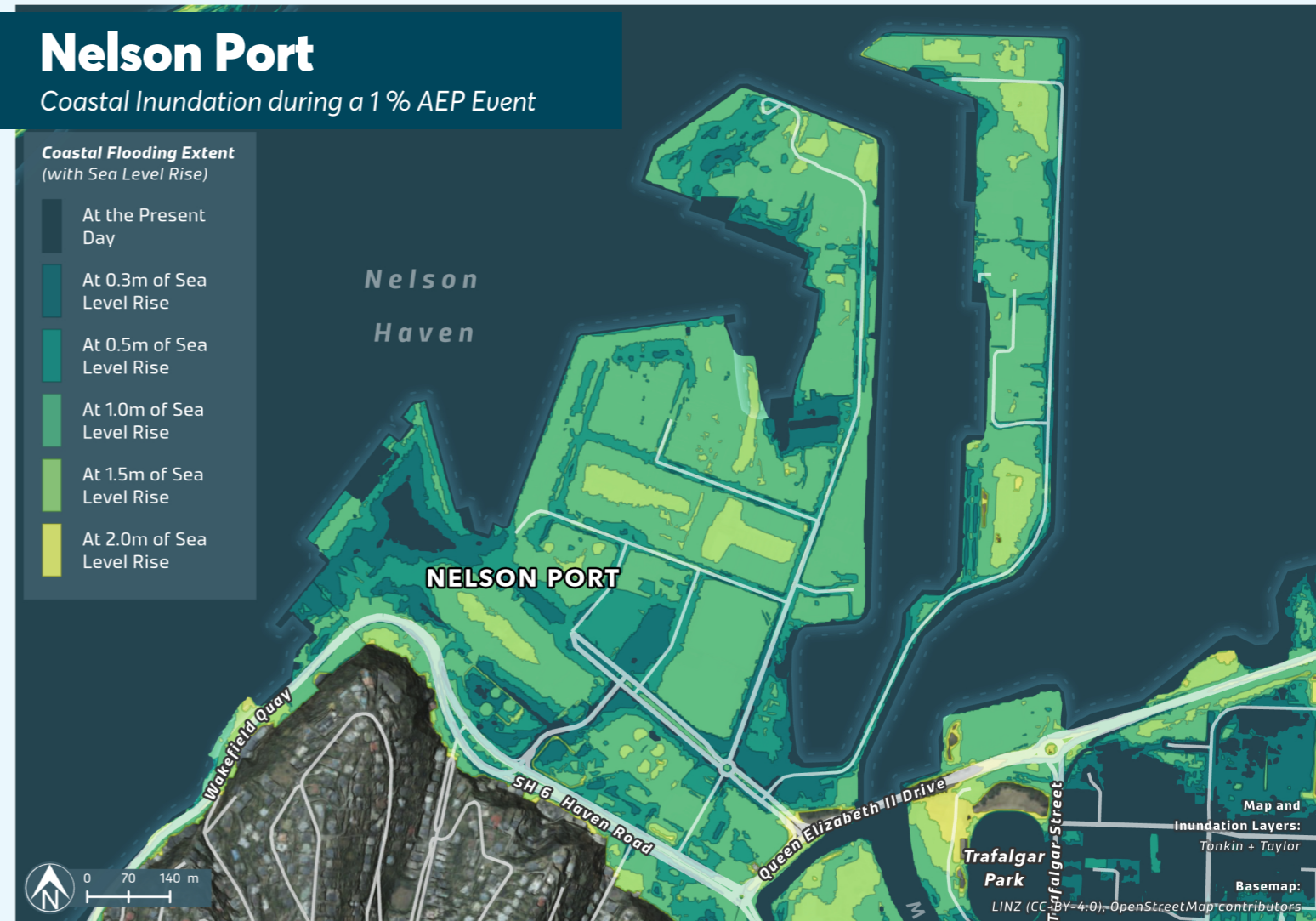


Nelson Port

Coastal Inundation during a 1 % AEP Event

Coastal Flooding Extent (with Sea Level Rise)

- At the Present Day
- At 0.3m of Sea Level Rise
- At 0.5m of Sea Level Rise
- At 1.0m of Sea Level Rise
- At 1.5m of Sea Level Rise
- At 2.0m of Sea Level Rise



Nelson Port

Flood Inundation during a 1 % AEP Event

River Flooding Extent (in a RCP8.5M scenario)

- At the Present Day (RCP8.5M)
- At 2050 (RCP8.5M)
- At 2070 (RCP8.5M)
- At 2090 (RCP8.5M)
- At 2130 (RCP8.5M)

