

# Tāhunanui

## About the area

The Tāhunanui consultation area includes the residential areas north of Annesbrook industrial area through to Rocks Road. It features:

- A significant ecosystem along the beach and shorefront.
- Predominantly lower-density residential areas.
- Some medium-density residential areas, including Rocks Road which includes a mixture of newish medium density and older single dwellings.
- Tāhunanui Primary School, located on Muritai Street.
- Suburban commercial and retail premises. Tāhunanui Drive includes the chemist and medical centre, and Rocks Road has a number of cafés.
- A well-known, extensively used recreational area, including a camping ground.
- State Highway 6 runs through the area. This sometimes closes during storm events.
- A heritage precinct, as well as multiple heritage sites and notable trees.

## What's at risk?

### At present day:

- Lower-lying areas are affected by 1% AEP coastal inundation, including the Tāhunanui Recreation Reserve, Waikare Street, Beach Road, properties along the Tāhunanui Beach foreshore and back beach area, some properties on Golf Road near Green Street, and properties alongside the Maire Stream tributary near Otterson and Chandler Streets.

- SH6 along Rocks Road is impacted by wave run-up and is occasionally closed to traffic in storm events.
- Coastal erosion is an issue at the west end of the Tāhunanui Spit.

### In future:

- At just 0.5 m of sea level rise, coastal inundation during a 1% AEP event will greatly increase across the area, and basin areas near Golf Road, Beach Road and Waikare Street will be potentially exposed to overland tidal flow.

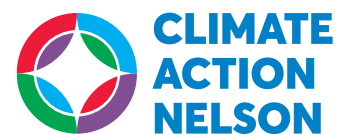
## What's happened previously?

- During Cyclone Fehi (February 2018), storm surge combined with a king tide caused substantial damage to waterfront properties, as well as flooding to residential properties in the Otterson and Chandler Streets area, and the Tāhunanui Reserve and campsite area.
- Wave overtopping during Cyclone Fehi on SH6 along Rocks Road led to the road being closed to traffic, and caused severe damage to the safety barrier.

## What's being done?

- Works relating to the Centennial Road stormwater pumping station will help provide localised protection from storm surge.
- Funding is allocated in the Long Term Plan to develop a stormwater strategy for Tāhunanui. This will seek to address network limitations from sea level rise through to 2090, as well as higher intensity rainfall events.
- SH6 access is protected by a concrete seawall between the Port and Tāhunanui. Operation and maintenance costs may rise if storms become more intense and the sea level rises.
- Stormwater culverts under Rocks Road have been upgraded, to allow for future upgrades inland.

[shape.nelson.govt.nz/climate-adaptation](https://shape.nelson.govt.nz/climate-adaptation)

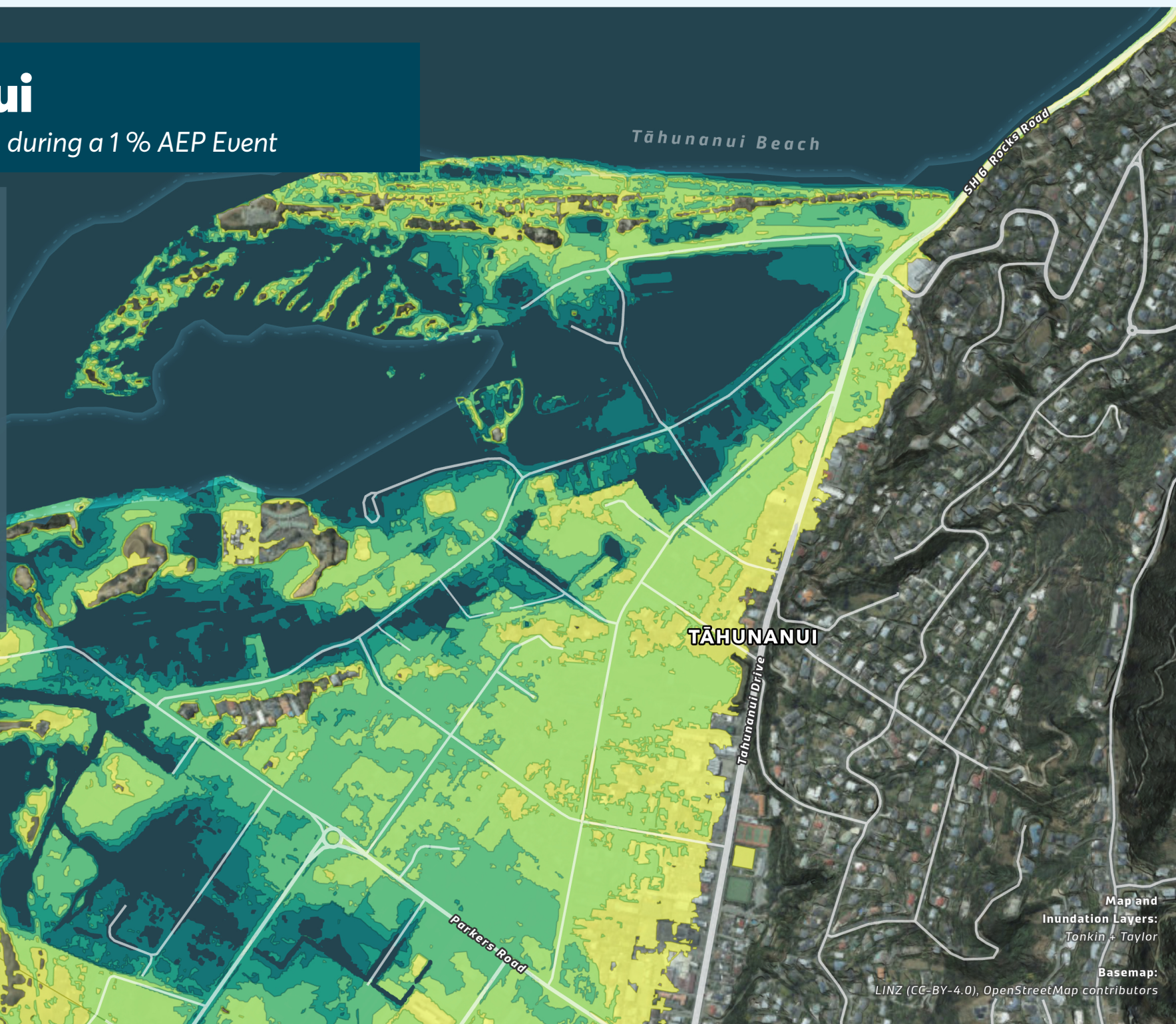


# Tāhunanui

## Coastal Inundation during a 1 % AEP Event

### Coastal Flooding Extent (with Sea Level Rise)

- At the Present Day
- At 0.3m of Sea Level Rise
- At 0.5m of Sea Level Rise
- At 1.0m of Sea Level Rise
- At 1.5m of Sea Level Rise
- At 2.0m of Sea Level Rise



Map and  
Inundation Layers:  
Tonkin + Taylor

Basemap:

LINZ (CC-BY-4.0), OpenStreetMap contributors