

# City Centre

## About the area

The city centre includes our inner city and city fringe. It features:

- Commercial and retail premises.
- Light industrial spaces, such as on Vincent and Vanguard Streets.
- Local and central government offices.
- Parks and open spaces for recreation.
- A small amount of medium density residential buildings.
- Heritage precincts, and numerous heritage buildings, including our iconic cathedral.
- Archaeological sites.
- Auckland Point Primary school.

## What's at risk?

### At present day:

- Lower-lying areas are at risk from coastal inundation including the Tahaki Street / Paru Paru Street area, Wakatu Square, Gloucester Street, and parts of Halifax, Vanguard, and Hardy Streets.

### In future:

- Just 0.5 m of sea level rise will significantly increase the extent of coastal inundation during 1% AEP events, and would also lead to localised overtopping of the Maitai River bank adjacent to the city centre.

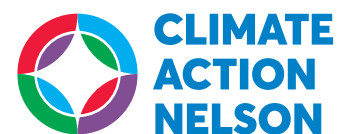
## What's happened previously?

- During Cyclone Fehi (February 2018), as a result of storm surge combined with a king tide, low-lying areas within the city centre flooded. The inundation level for this event was slightly higher than what was expected for a 1% AEP level.
- The most significant river flood event on record occurred in August 1970, leading to low-lying areas being closed to vehicle traffic. Flooding in areas like the northern end of Vanguard Street was likely to have been over half a metre deep, and there is a reference to people accessing the flooded streets in a rowing boat.

## What's being done?

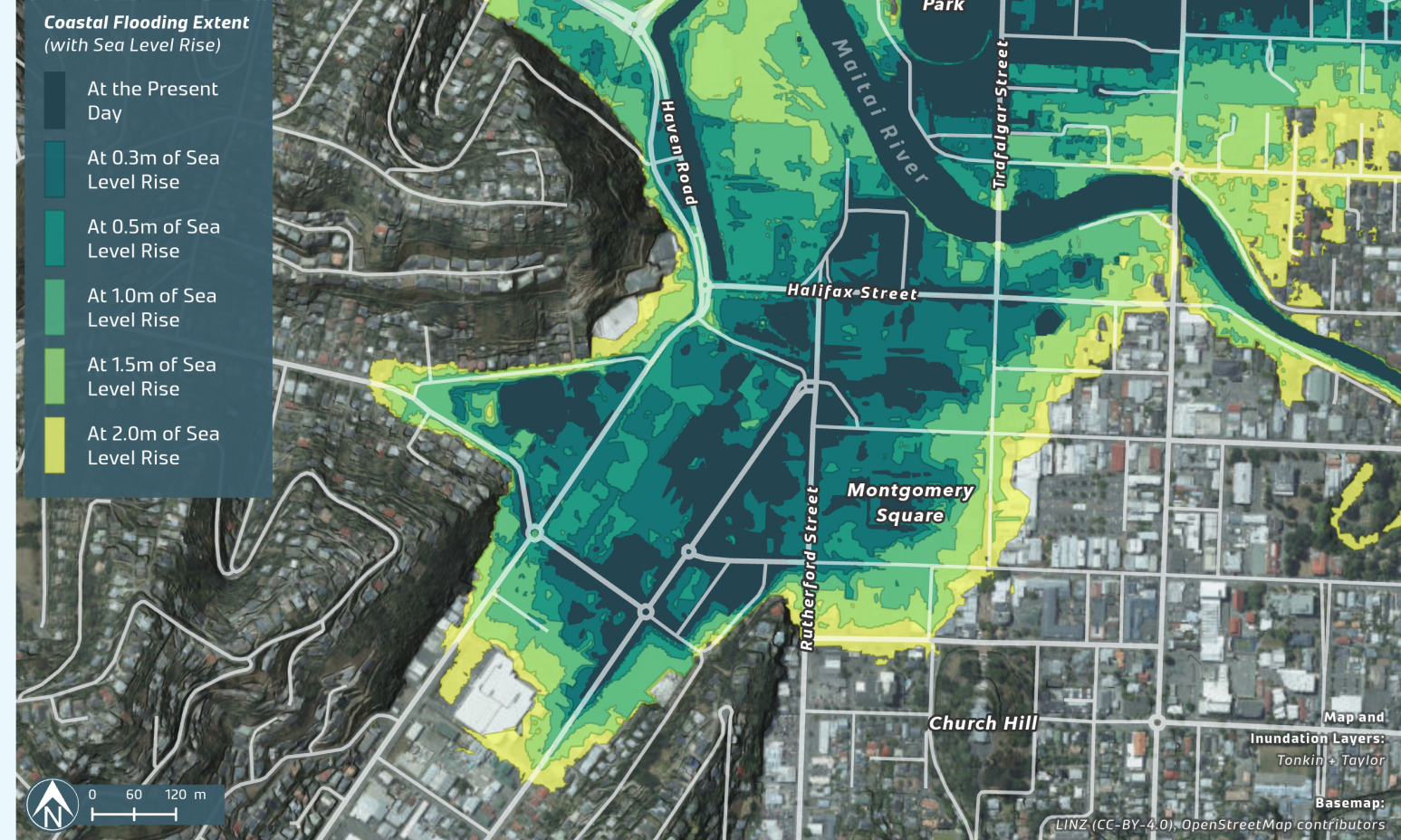
- Funding is allocated in the Long Term Plan to develop a stormwater strategy for central Nelson, including the city centre. This will seek to address network limitations from sea level rise through to 2090, as well as higher intensity rainfall events.
- Funding is also allocated in the Long Term Plan to develop and implement options to improve Maitai River flood management.
- Significant stormwater upgrades have been completed since the 1970 flood, and several major projects are currently in progress.

[shape.nelson.govt.nz/climate-adaptation](https://shape.nelson.govt.nz/climate-adaptation)



## Nelson City Centre

Coastal Inundation during a 1% AEP Event



## Nelson City Centre

Flood Inundation during a 1% AEP Event

