

Nelson Tasman 2021-2051 Future Development Strategy

Community webinars October 2021

Questions?

- To ask a question, please click on the Q&A button at the bottom of your Zoom screen



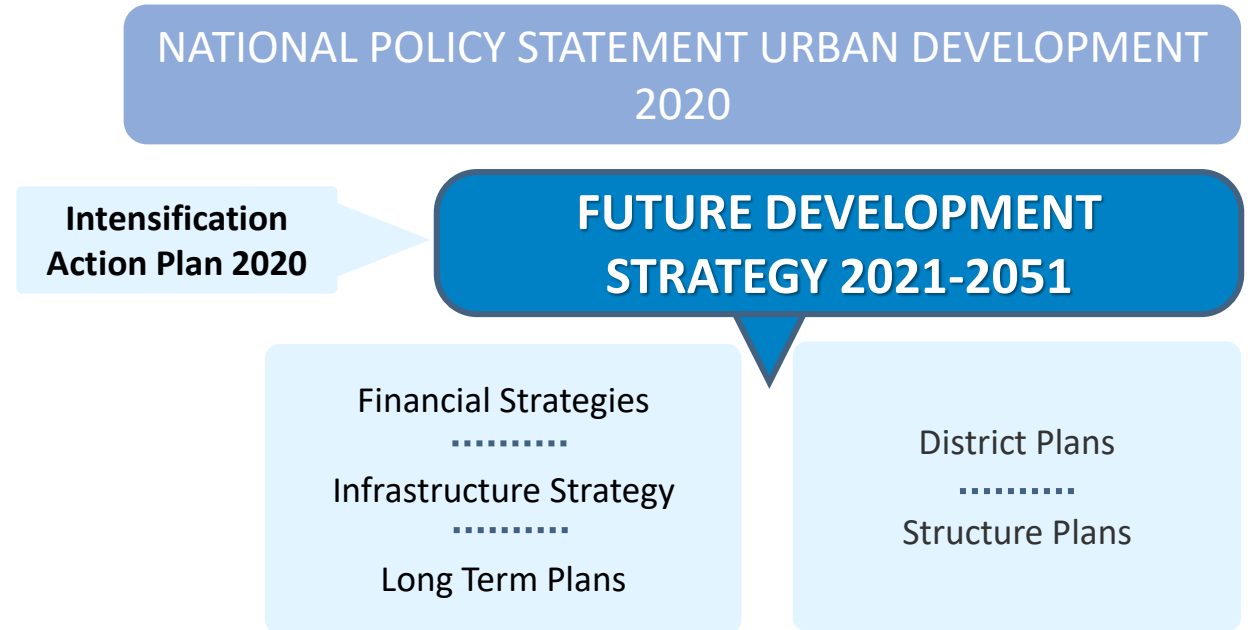
Agenda

1. FDS Project overview & background
2. Developing Strategic directions
3. Opportunities and constraints
4. Site assessment process
5. Questions

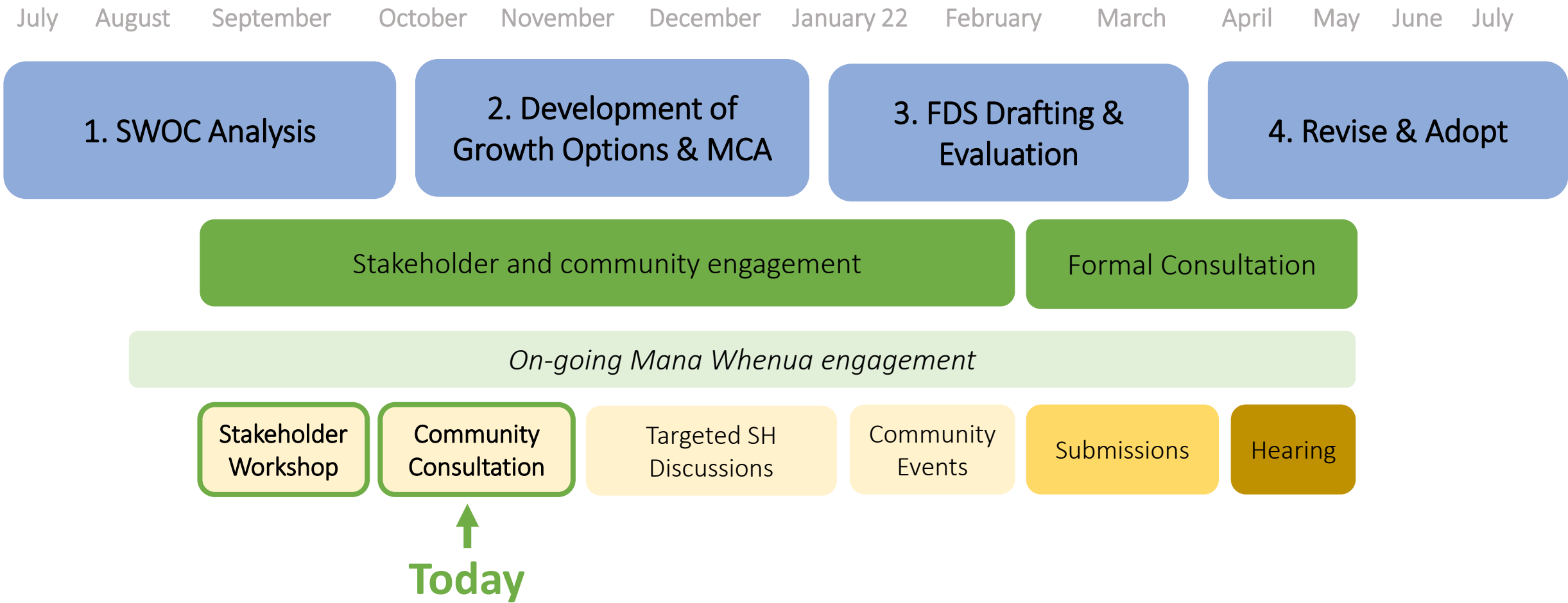


What is an FDS?

- Required by the NPS – Urban Development.
- Growth strategy that identifies:
 - Constraints on development.
 - When and where growth will occur.
 - Supporting infrastructure.
- Must provide sufficient development capacity for housing and business.
- Iwi and hapu values a core component.
- Strategic document informing wider Council decision making.



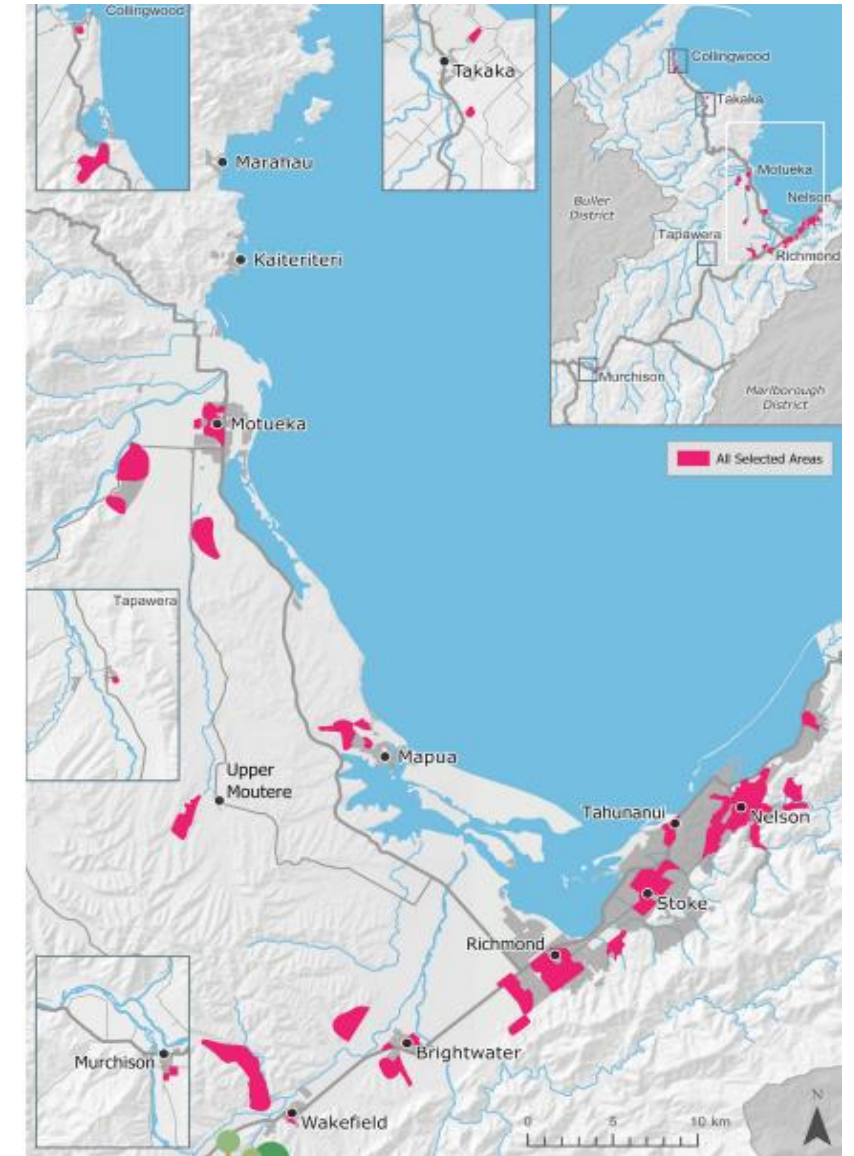
FDS Process



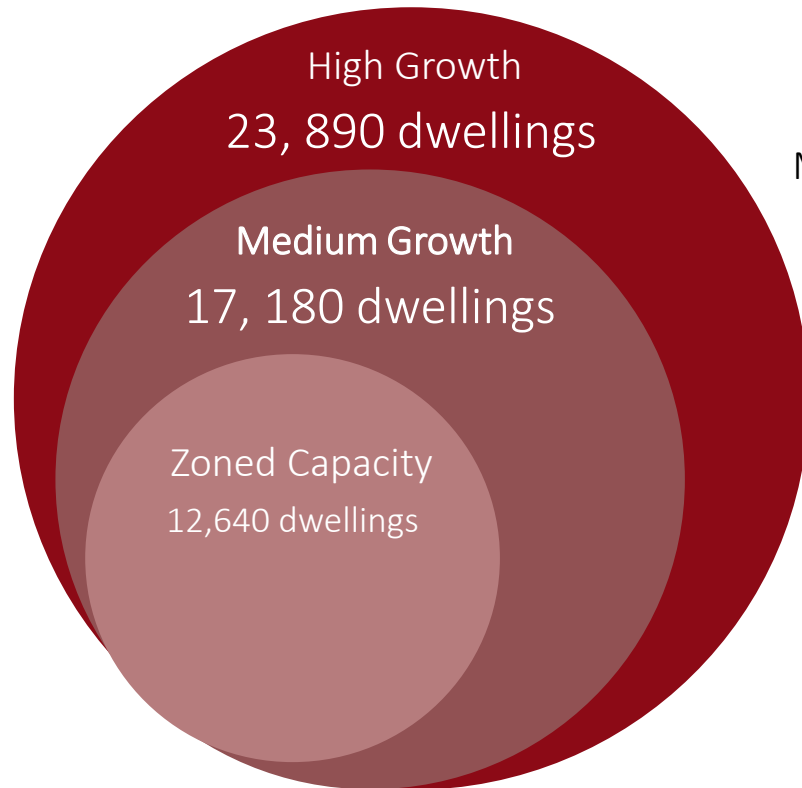
Current Context

Status of the 2019 FDS

- 2019 FDS identified capacity for a further 14,249 dwellings across both brownfield and greenfield sites.
- Also some new business locations – Richmond, Mapua, Murchison and mixed use in Nelson.
- Proposed rezoning is underway within Nelson and Tasman to address growth issues and will occur over the next couple of years.



What are the numbers telling us?



High Growth Scenario

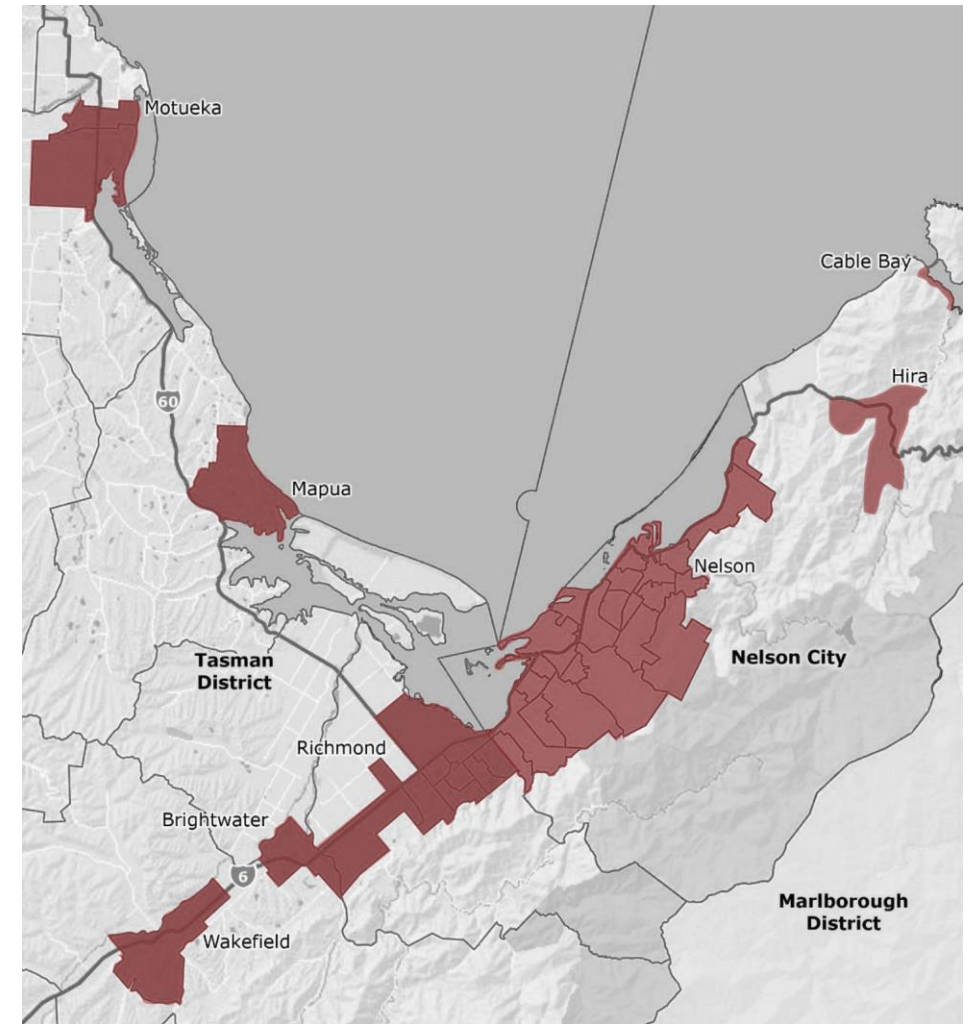


+ 11,250 dwellings

Medium Growth Scenario



+ 4,450 dwellings



Strategic Directions

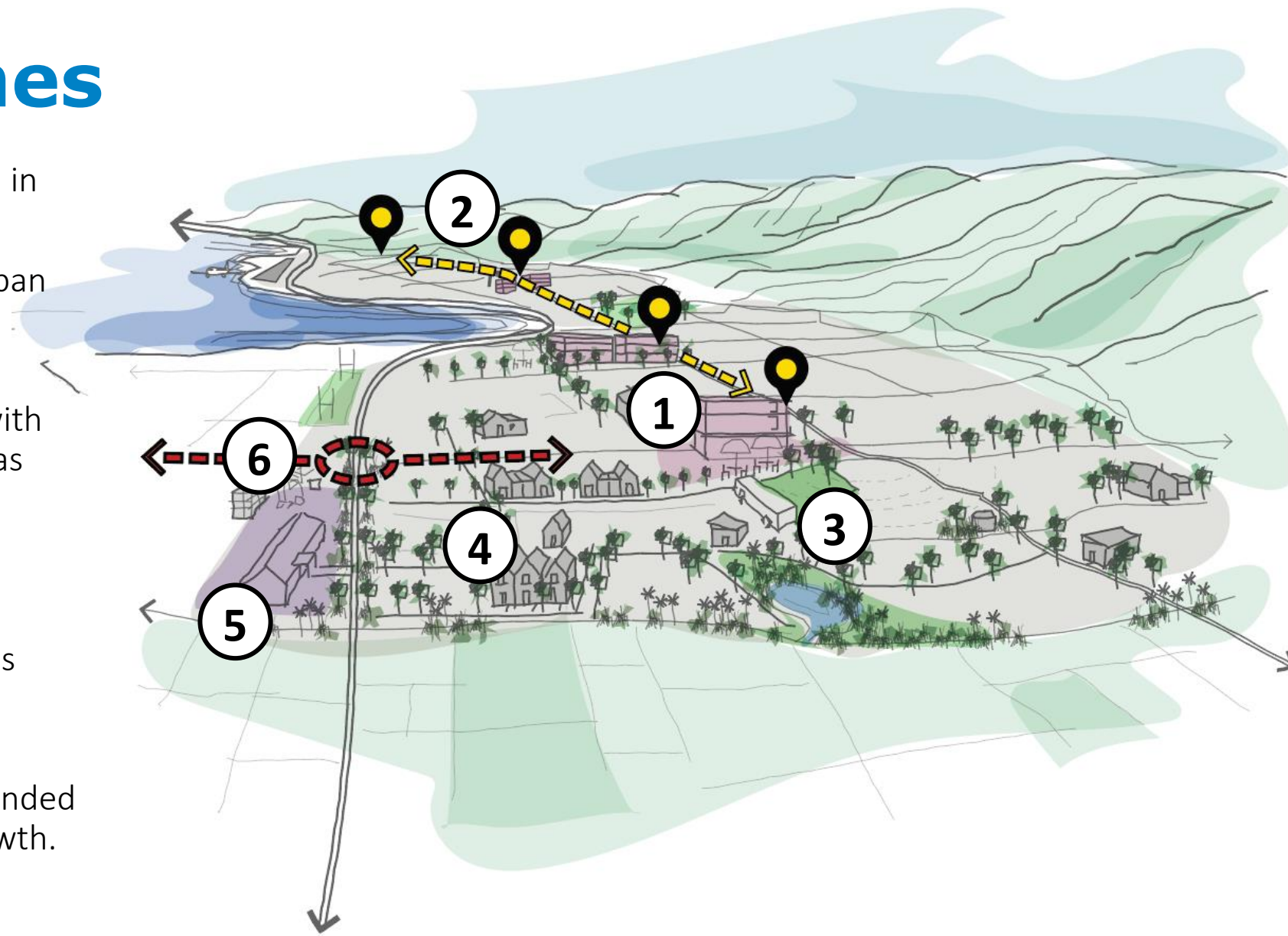
Developing Strategic Directions

- The FDS will be guided by a series of strategic directions that will be developed with the community, iwi and hapū and stakeholders.
- The strategic directions will be informed by:
 - Mission/outcome/key issues from Nelson LTP 2021-2031 consultation document
 - Vision/outcomes from Tasman LTP 2021-2031 consultation document and overall aims from final LTP
 - Feedback on the Long Term Plan, and other planning documents
 - NPS UD policy
 - Other national direction (e.g. Draft NPS-Highly Productive Land)



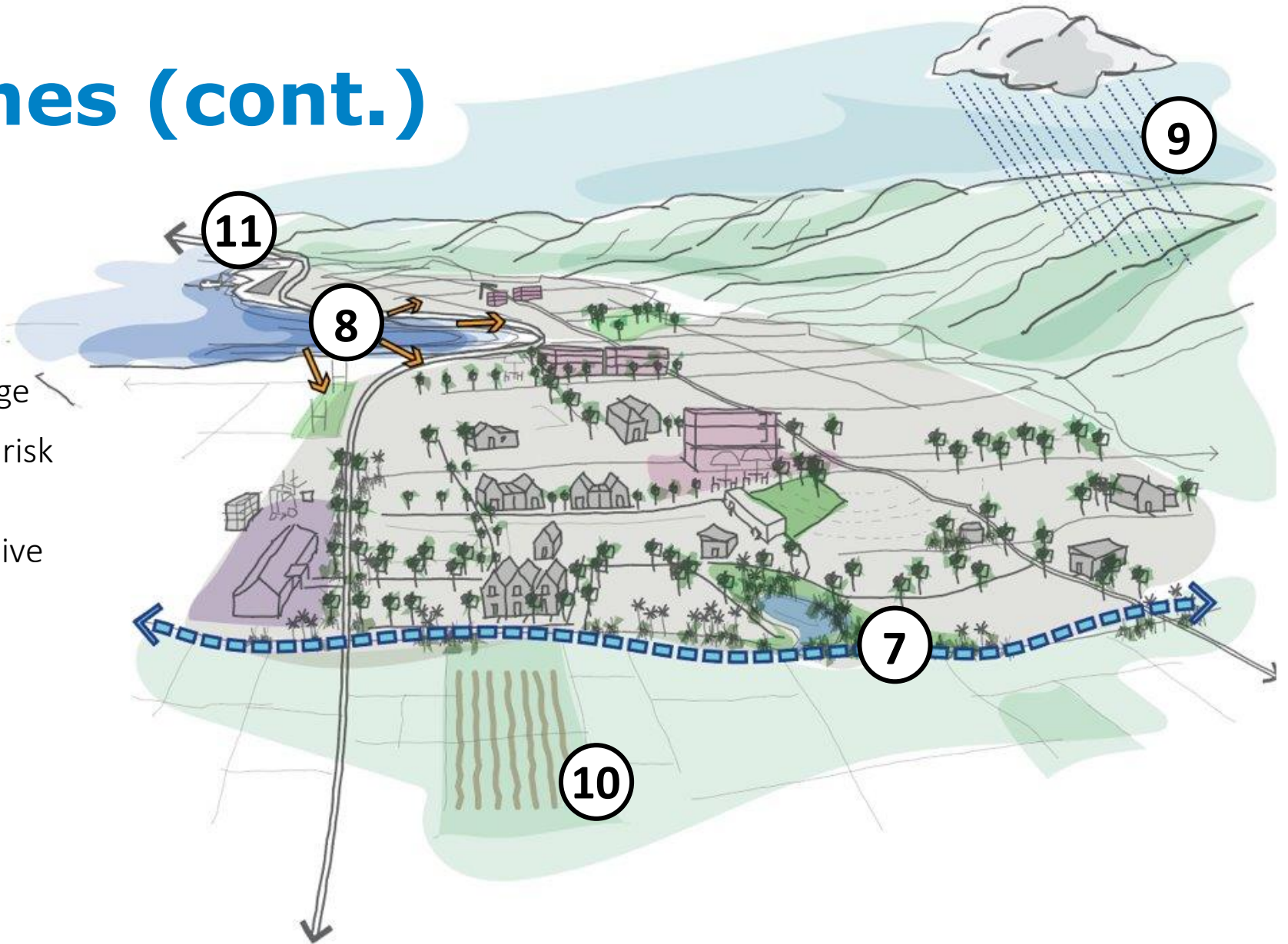
Draft outcomes

1. Urban form supports a reduction in GHG emissions
2. Consolidated and intensifying urban cores and supporting centres/settlements
3. New housing focussed in areas with good access to jobs and amenities as well as areas people want to live
4. A range of housing choices are provided
5. Sufficient residential and business land capacity is provided to meet demand
6. New infrastructure is planned, funded and delivered to integrate with growth.



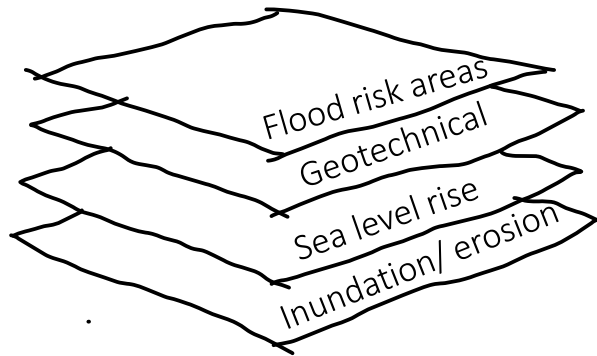
Draft outcomes (cont.)

- 7. Natural environments are maintained and their unique attributes are protected
- 8. Nelson Tasman is resilient to the likely future effects of climate change
- 9. Nelson Tasman is resilient to the risk of natural hazards
- 10. Nelson Tasman's highly productive land is maintained for primary production
- 11. Existing infrastructure is used efficiently to support growth

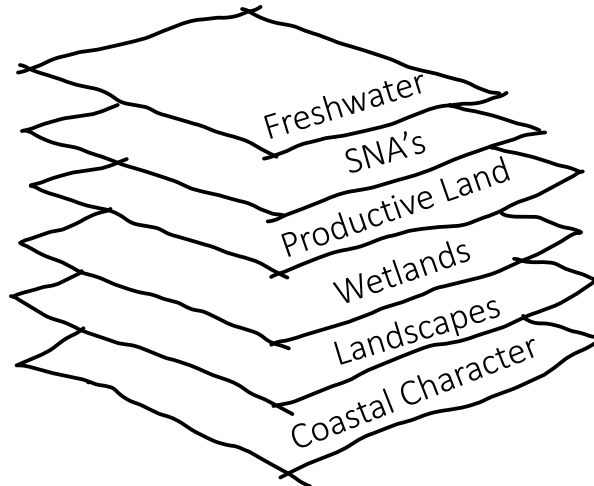


Opportunities, Constraints & Site Assessment Process

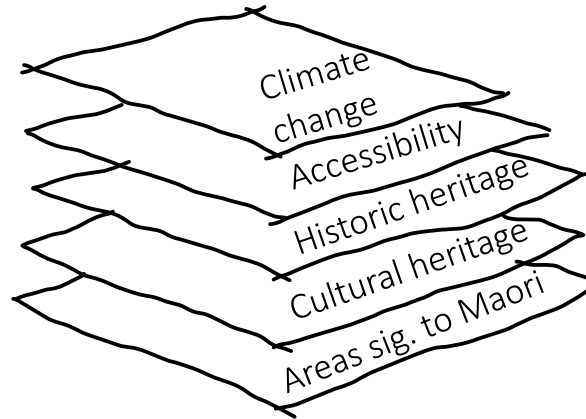
Opportunities & Constraints Mapping



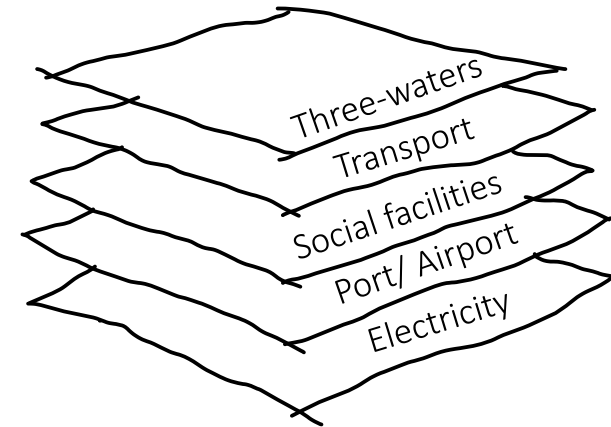
Natural Hazards



Natural Environment



Human Environment



Infrastructure

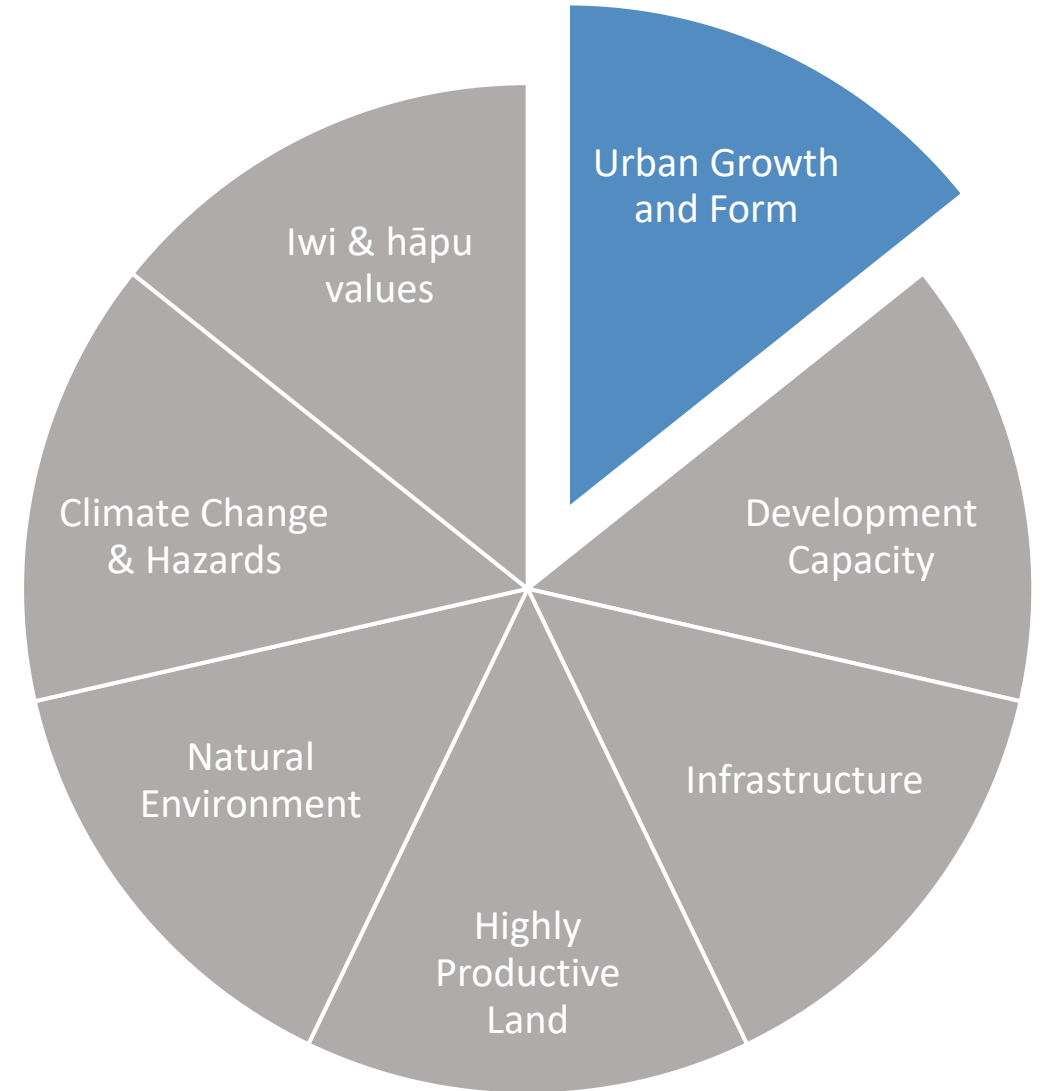
MCA Scoring Example



5. Accessibility by active transport to essential services within 15 minutes and by active or public transport to income, employment, education and social opportunities within 30 minutes.

...

1. No essential services, employment or education opportunities accessible within 30 minutes via active or public transport.



Next Steps

- Assessment of sites and FDS drafting
- Statutory consultation – next March/April
- Physical drop in sessions



Wrap Up

- Let us know about potential sites by Tuesday 26th October 2021
- Visit <https://shape.nelson.govt.nz/future-development-strategy> to give feedback
- Email queries to FutureDevelopmentStrategy@ ncc.govt.nz



Questions?

- To ask a question, please click on the Q&A button at the bottom of your Zoom screen

