

NOTE: DO NOT CONSTRUCT THE CROSSINGS IN THIS ZEBRA CROSSING LAYOUT. CONSTRUCT AS SHOWN IN THE DESIGN



PEDESTRIAN CROSSING SPEED CUSHION  
NTS

- NOTES
- CONCEPT PLANS ONLY, SIGNAGE AND SEVERAL PAINT MARKINGS NOT SHOWN FOR CLARITY

CONTRACT No.

NCC DWG No.

REV	REVISIONS	EC	JC	JN	30/06/2020	DATE	PROF REGISTRATION
C	ISSUED FOR DISCUSSION	EC	JC	JN	30/06/2020	DATE	PROF REGISTRATION
B	ISSUED FOR DISCUSSION	EC	JC	JN	30/06/2020	DATE	PROF REGISTRATION
A	ISSUED FOR DISCUSSION	EC	JC	JN	30/06/2020	DATE	PROF REGISTRATION



APPROVED:

GROUP MANAGER INFRASTRUCTURE

DATE:

INNOVATIVE STREETS  
KAWAI STREET SOUTH, NELSON

PLAN  
KAWAI/TIPAHİ INTERSECTION

Status Stamp	FOR CONSTRUCTION
Date Stamp	27/11/2020
Coordinate System:	
Scales (A1)	Datum:
NCC DWG No.	Sheet No. C002
Rev. C	

DO NOT SCALE - IF IN DOUBT, ASK

200 mm

150

100

90

80

70

60

50

40

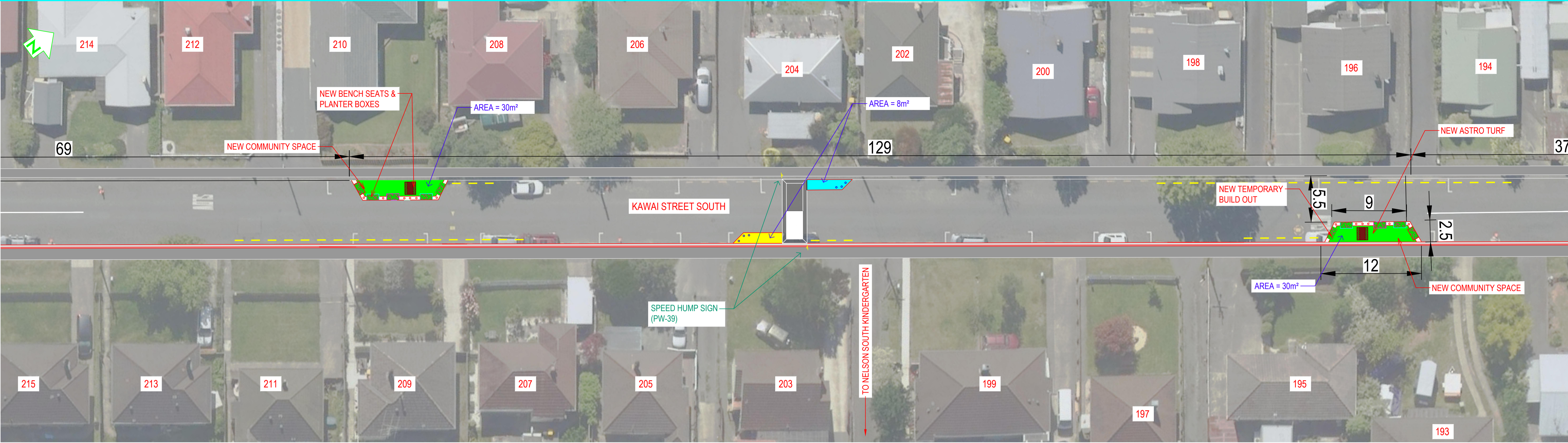
30

20

10

0

ORIGINAL SIZE A1



PLAN  
SCALE:1:250(A1) 1:500(A3)

NOTES

- CONCEPT PLANS ONLY. SIGNAGE AND SEVERAL PAINT MARKINGS NOT SHOWN FOR CLARITY

CONTRACT No.  
NCC DWG No.

REV	ISSUED FOR DISCUSSION	EC	JC	JN	30/06/2020
A	ISSUED FOR DISCUSSION	EC	GW	JN	11/06/2020
REV	ISSUED FOR DISCUSSION	DRN	CHK	APP	DATE
REVISIONS					

SURVEYED		
DESIGNED	E Cooper	30/06/2020
DRAWN	E Cooper	30/06/2020
CAD REVIEW	J Cooper	30/06/2020
DESIGN CHECK	J Cooper	30/06/2020
DESIGN REVIEW		
APPROVED	J Newton	27/11/2020
PROF REGISTRATION		

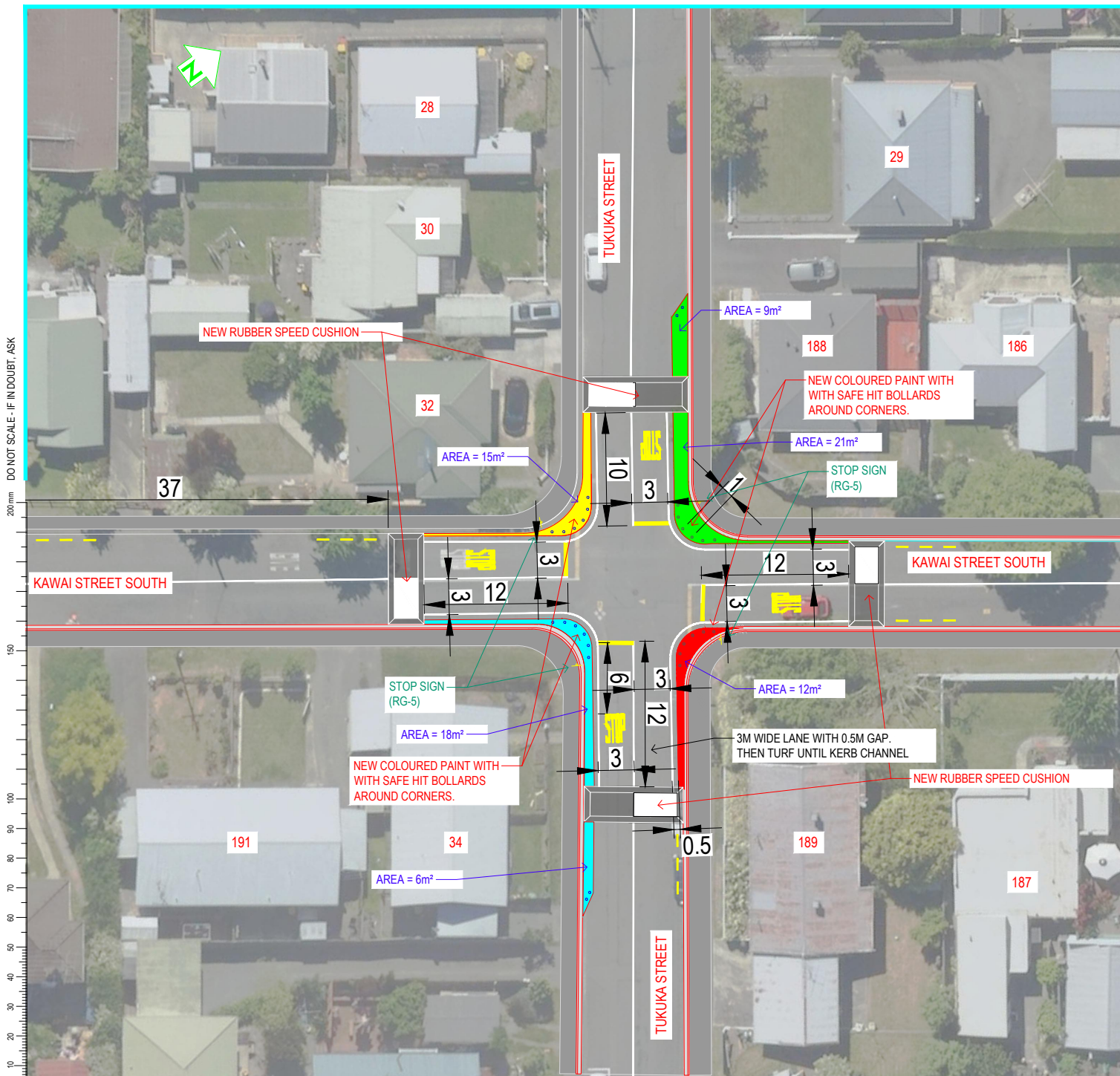
APPROVED



INNOVATIVE STREETS  
KAWAI STREET SOUTH, NELSON

PLAN  
KAWAI STREET

Status Stamp	FOR CONSTRUCTION		
Date Stamp	27/11/2020		
Coordinate System:			
Scales (A1)	Datum:		
NCC DWG No.	Sheet No.	Rev.	C



**PLAN**  
SCALE:1:250(A1) 1:500(A3)

1. CONCEPT PLANS ONLY, SIGNAGE AND SEVERAL PAINT MARKINGS NOT SHOWN FOR CLARITY

CONTRACT No.

NCC DWG No.

						SURVEYED		
						DESIGNED	E Cooper	30/06/2020
						DRAWN	E Cooper	30/06/2020
						CAD REVIEW	J Cooper	30/06/2020
						DESIGN CHECK	J Cooper	30/06/2020
C	ISSUED FOR DISCUSSION					DESIGN REVIEW		
A	ISSUED FOR DISCUSSION					APPROVED	J Newton	07/11/2020
REV	ISSUED FOR DISCUSSION					PROF REGISTRATION:		
	REVISIONS	EC	JC	JN	30/06/2020			
		EC	GW	JN	11/06/2020			
		DRN	CHK	APP	DATE			



APPROVED:

DATE:

## GROUP MANAGER INFRASTRUCTURE

## INNOVATIVE STREETS KAWAI STREET SOUTH, NELSON

## PLAN

### KAWAI/TUKUKA INTERSECTION

Status Stamp

**FOR CONSTRUCTION**

Date Stamp

2711/2020

Coordinate System:

Scales (A1)

Datum:

NCC DWG No.

Sheet No.

CO

CO

City Court

